

INSTRUMENTATION

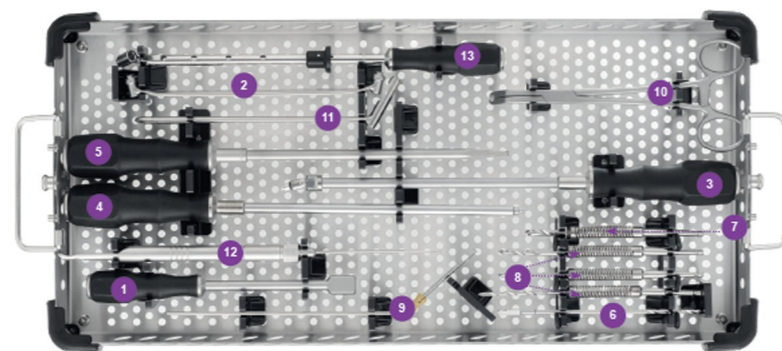
INSTRUMENTATION
SYMBOL® STEM



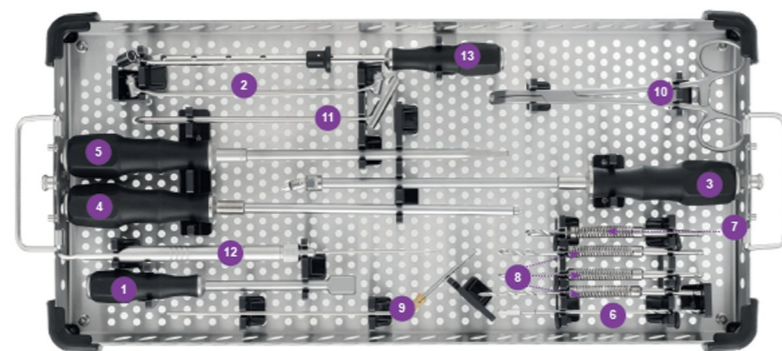
INSTRUMENTATION
SYMBOL® REAMING



INSTRUMENTATION
SYMBOL® CUPS



INSTRUMENTATION
SYMBOL® SCREWING



R.T.S Co.
ره‌طب‌سازان
www.rahtesazan.com



SYMBOL®

SYMBOL®
STEMS AND CUPS



DUAL MOBILITY

DUAL MOBILITY CUPS

• DUAL MOBILITY CEMENTLESS CUPS



SYMBOL® Cup DM HA
Metal shell: CoCr – ISO 5832-4
Coating: Sprayed titanium – ASTM F 1580
HA – ISO 13779-2



SYMBOL® Cup DMR HA
Metal shell: CoCr – ISO 5832-4
Coating: Sprayed titanium – ASTM F 1580
HA – ISO 13779-2



SYMBOL® Cup DM CEM
Metal shell: CoCr – ISO 5832-4

ALL DUAL MOBILITY CUPS ARE AVAILABLE IN SIZES

SIZE	44	46	48	50	52	54	56	58	60	62	64
------	----	----	----	----	----	----	----	----	----	----	----

• SCREWS FOR CUP DMR HA



Screw 4.5
CoCr – ISO 5832-12

Length	36	40	44	48	52
--------	----	----	----	----	----

• PEGS FOR CUP DMR HA



Peg
CoCr – ISO 5832-12

• POLYETHYLENE LINERS FOR SYMBOL® DUAL MOBILITY CUPS

FOR HEAD 22.2 mm

SIZE	44	46
------	----	----

FOR HEAD 28 mm

SIZE	48	50	52	54	56	58	60	62	64
------	----	----	----	----	----	----	----	----	----



PE liner UHMWPE – ISO 5834-2

CEMENTLESS STEMS WITHOUT COLLAR



SYMBOL® Stem STD HA

Material: TA6V – ISO 5832-3
Coating: HA – ISO 13779-2

CEMENTED STEM WITHOUT COLLAR



SYMBOL® Stem STD CEM

Material: M30 stainless steel – ISO 5832-9

SYMBOL® STEM STD HA 150° CCD ANGLE	Size	1	2	3	4	5	6	7	8	9	10
SYMBOL® STEM STD CEM 150° CCD ANGLE	Size	1	2	3	4	5	6	7	8	9	10

SYMBOL® FEMORAL HEADS

METALLIC HEADS
C IMPLANTS Co-Cr (ISO 5832-12)

NECK SHORT -2.5	22.2mm	NECK SHORT -3.5	28mm
NECK MEDIUM 0		NECK MEDIUM 0	
NECK LONG +2.5		NECK LONG +3.5	

NECK SHORT -3.5	28mm	CERAMIC HEADS
NECK MEDIUM 0		BIOLOX® DELTA CERAMIC IMPLANTS (ISO 6474-2)
NECK LONG +3.5		

ADAPTABILITY CUP ANCILLARY



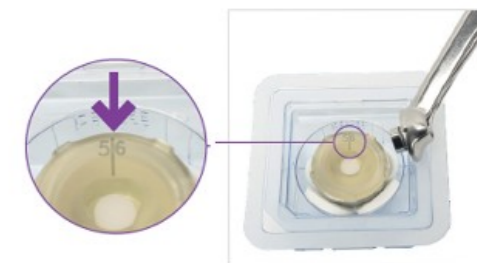
Offset cup holder



Offset reamer holder



Press for mobile liner



“NO TOUCH” HANDLING



Drill the peg holes using the flexible drill bit and guide.

ADAPTABILITY STEM ANCILLARY



Broach holder, anterolateral approach



Broach holder, posterior approach



Straight broach holder, Hueter approach



Double offset broach holder - right



Double offset broach holder - left